

Pinelands Conservation Fund

Permanent Land Protection

PCF Background

- Established in 2005
- Additional funding through CMC MUA
- Priorities amended in 2014
- Permanent land protection: **8,969** acres
- Additional funding through SJTA (2019)
- Suggested acquisition priorities revision in 2021

2019 Amendment to South Jersey Transportation Authority Agreement

- April 12, 2019, the Pinelands Commission authorized execution of amendment to the 2004 MOA between the Commission and the SJTA concerning short term development projects at the Atlantic City International Airport.
- 2004 MOA required creation of a 290 acre Grassland Conservation Management Area on the Airport property.
- 2019 MOA Amendment permitted SJTA to mow the on-site Grassland Conservation Management year round.

2019 MOA Amendment (continued)

- Offset for the 2019 MOA Amendment:
 - Acquisition, creation and long term maintenance of a new Grassland Conservation and Management Area in the Pinelands.
 - Enhancement of an additional 12 acres site for frosted elfin butterfly.
 - Payments totaling Three Million Dollars were to be made to the Pinelands Conservation Fund for the acquisition of land with a priority given for threatened or endangered grassland bird habitat, if available.

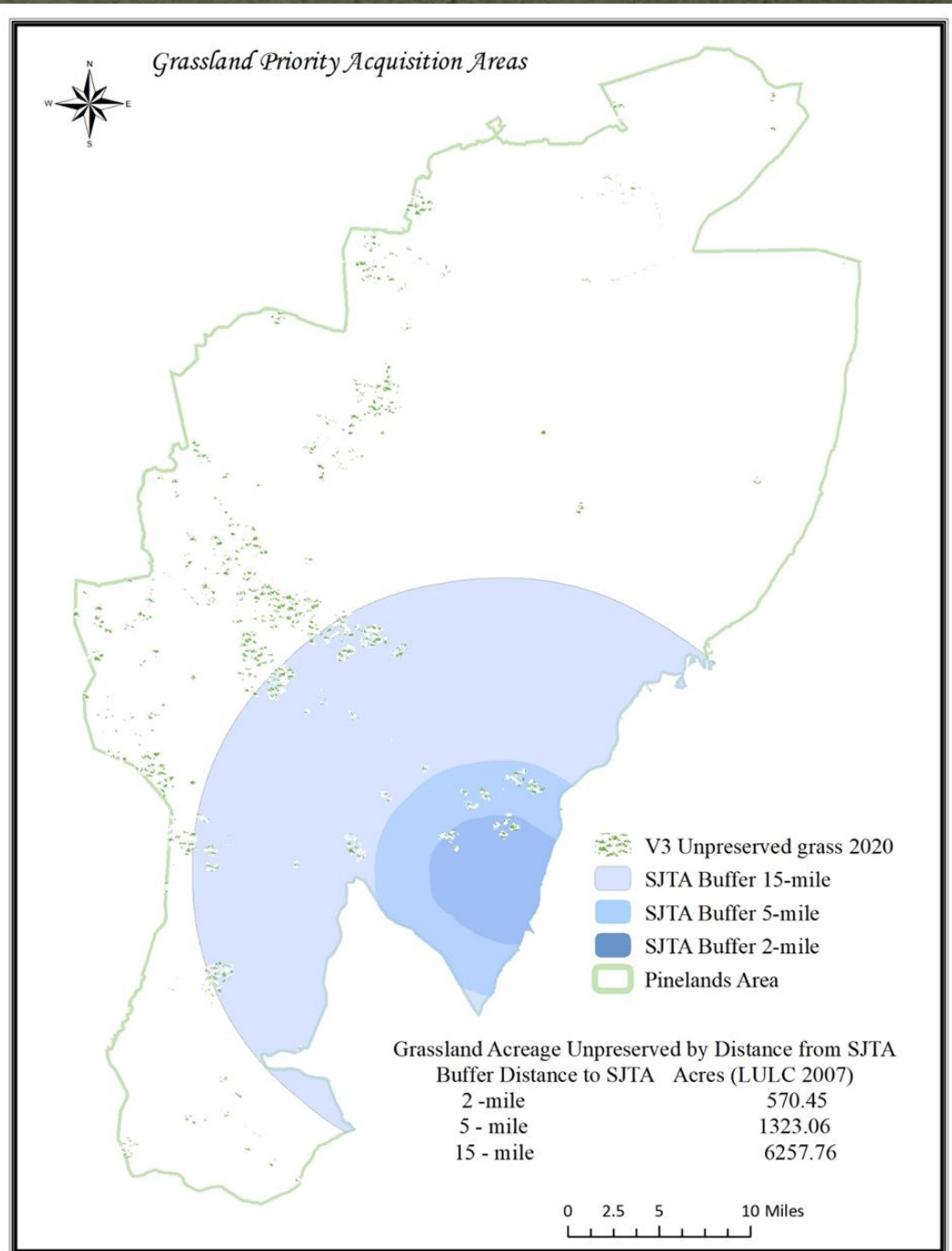
Acquisition 2021

- New funding round
- \$1,000,000
- Acquisition Priorities*
- Process
- Schedule

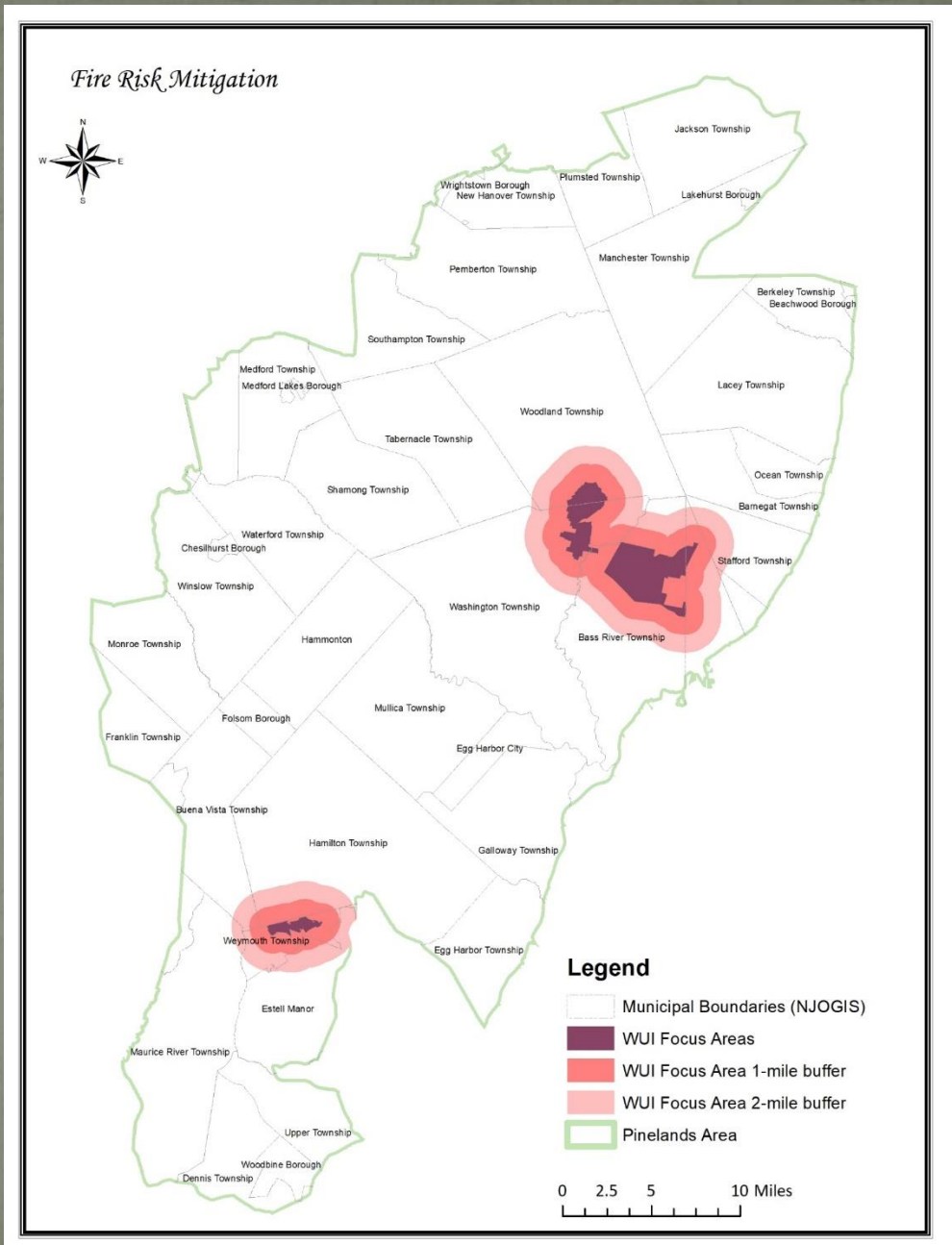
Land Acquisition Priorities

- Grassland habitats
- Impacts of climate change
 - Carbon sequestration
 - Fire management
 - Flood hazard
- “Traditional” acquisitions
 - 502 Fund Areas
 - Target Areas

Grassland Focus Area

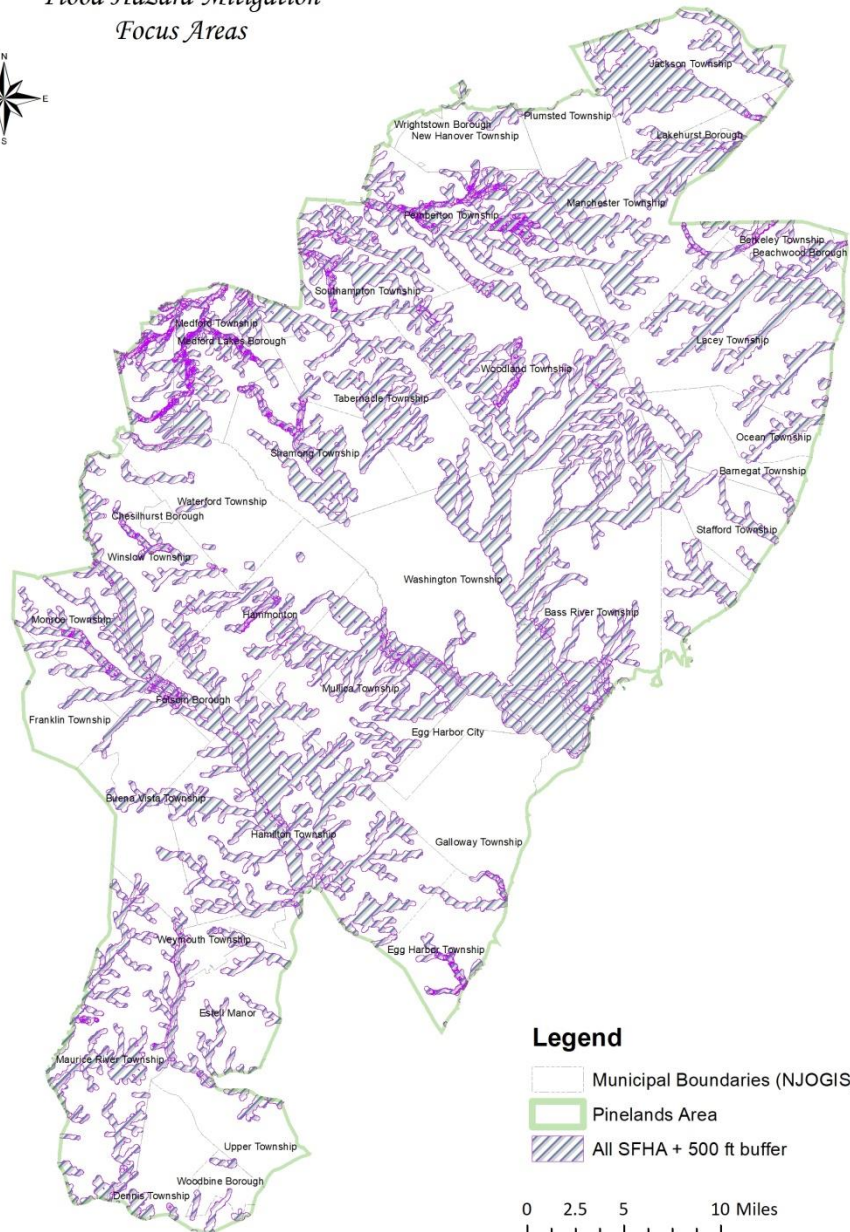


Wild-Urban Interface Focus Area



Flood Hazard Focus Area

Flood Hazard Mitigation Focus Areas



Project Evaluation Matrix

Factor	Low (1)	Medium (3)	High (5)
Location: Is the project in PCF focus area	In RGA, Town, Village or Rural Development Area AND none of the designated focus areas	In designated focus areas and PAD, SAPA, APA or Forest Area	Within a five-mile radius of SJTA and inside the State Pinelands Area
T&E Habitats:	No state/federal T&E habitat per NJDEP Landscape Model AND no NJPC and ENSP sightings	T&E habitat exists based upon NJDEP Landscape model and/or NJPC and ENSP sightings	Grassland habitat exists based upon NJDEP Landscape model and/or NJPC and ENSP sightings
Size:	Less than 50 acres	Between 50 and 100 acres	100 acres or more; add 3 additional points if greater than 500 acres
Contiguity:	Greater than one mile from preserved habitat or open space	Less than one mile from known grassland T&E habitats but not contiguous	Contiguous with preserved habitat or open space
Partner Contribution:	67.7% of acquisition costs	At least 75% acquisition costs	Greater than 75% acquisition costs
Long-Term Maintenance Capability:	No monitoring or maintenance plan/ no identified land steward	Proposed Monitoring and maintenance plan; Not previously implemented	Established Monitoring and maintenance program / Gov't. agency or NGO is prepared to manage land
Climate Change Mitigation:	Flood hazard mitigation	Wildfire Management	Carbon Sequestration/ Storage
Purpose:	Historic Preservation	Open Space	T & E or Climate Change

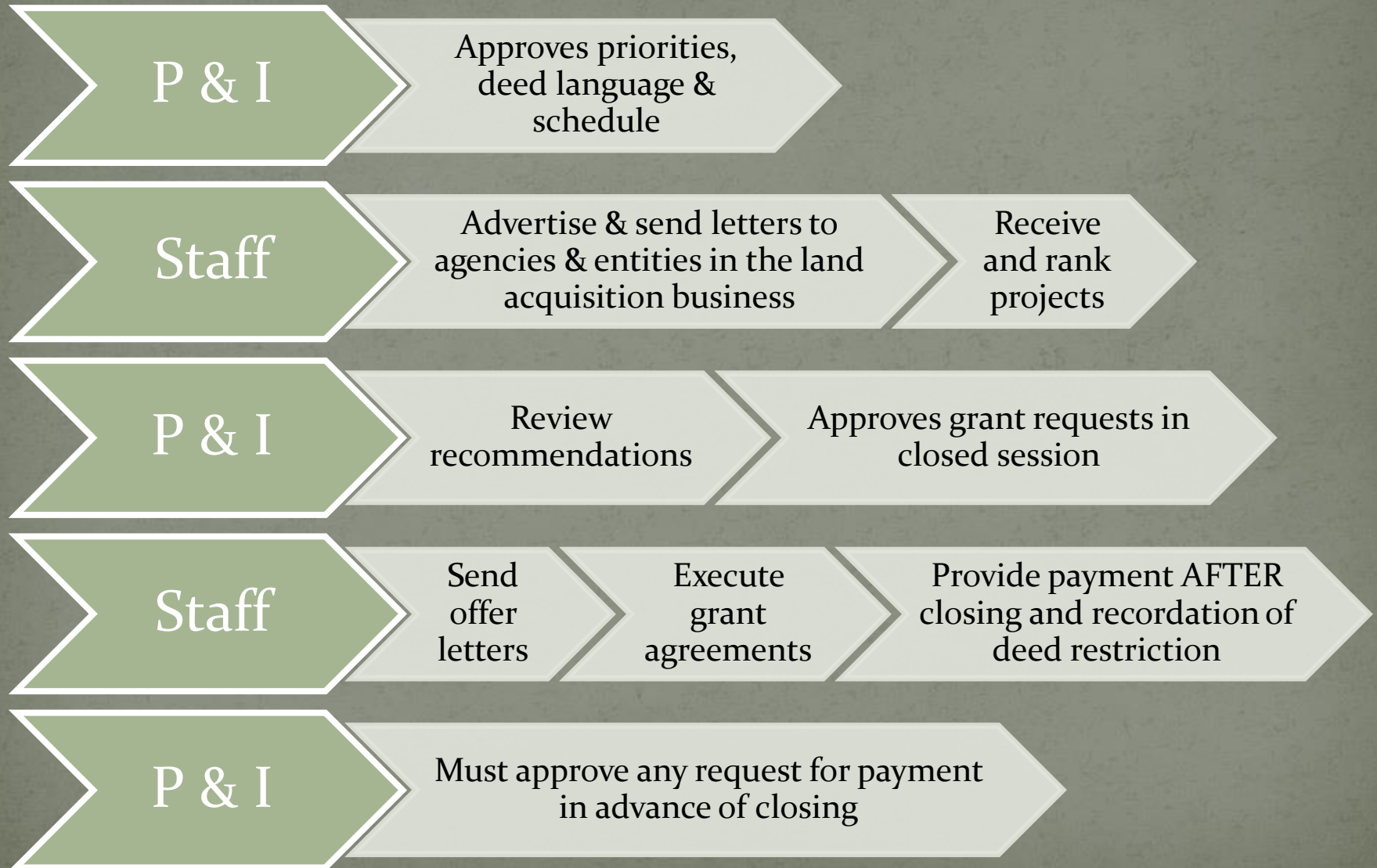
Deed of Conservation Restriction

Template will be revised to address

- Habitat maintenance plan (grassland)
- Local populations protections
- Types of forestry practices
- Low intensity recreation
- Land management issues of monitoring and protection

April 30, 2021 P & I meeting for approval

Acquisition Process



Permanent Land Protection Schedule

- P & I Committee approval
 - March 26, 2021 : Priorities & Matrix
 - April 30, 2021 : Deed of Conservation Restriction
- Open application round ~ late May
- Deadline for submitting proposals ~July 30
- Recommendations to P & I ~ October 2021



Questions?